

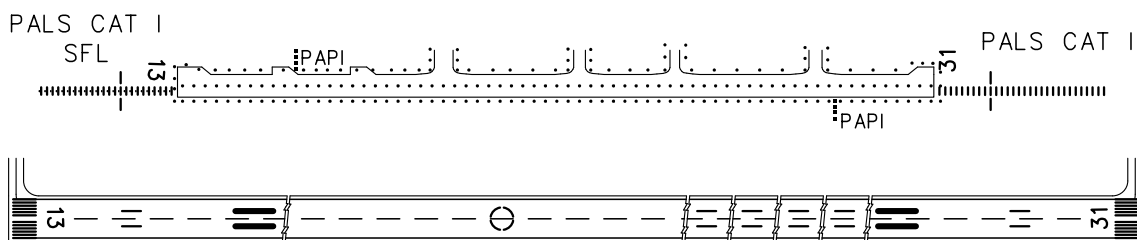
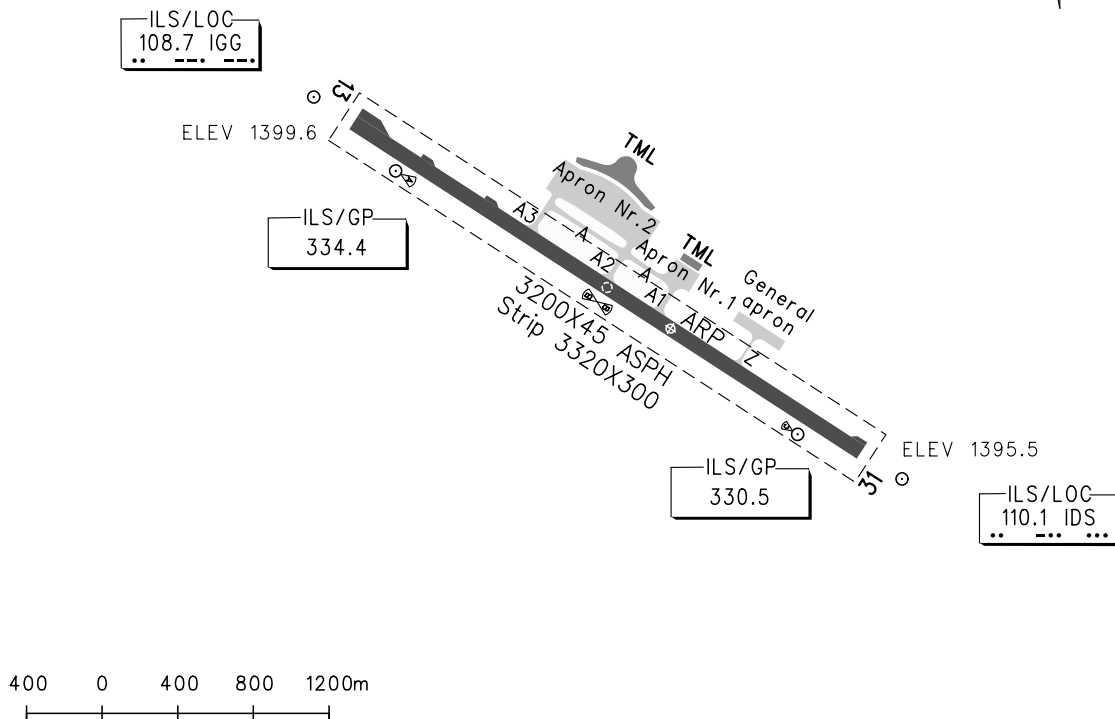
# AERODROME CHART

TWR 118.15(118.8)

**ZBDS ORDOS/Ejin Horo**  
N39° 29.4'E109° 51.9' ELEV 1400m

RWY	Direction	Bearing strength(PCN)	
13	127°	RWY	90/F/B/W/T
		TWY A,A2,A3. Apron Nr.2	88/R/B/W/T
		TWY A1. Apron Nr.1	52/R/B/W/T
31	307°	TWY Z. General apron	11/R/B/W/T

BEARINGS ARE MAGNETIC  
ALTITUDES, DISTANCES,  
ELEVATIONS AND HEIGHTS  
IN METERS



	TAKE-OFF MINIMA(WITH RELIABLE ALTN)(m)				LIGHTS	
	RWY13		RWY31		RWY13	RWY31
	REDL	NIL(Day only)	REDL	NIL(Day only)		
<b>A</b>					PALS CAT I	PALS CAT I
<b>B</b>	RVR 400	RVR 500	RVR 400	RVR 500	SFL	PAPI
<b>C</b>	VIS 800	VIS 800	VIS 800	VIS 800	PAPI	REDL
<b>D</b>					REDL	RCLL
					RCLL	

Note: VIS 1600m for single engine

Changes: Airport renamed.