

# AIRPORT DIAGRAM

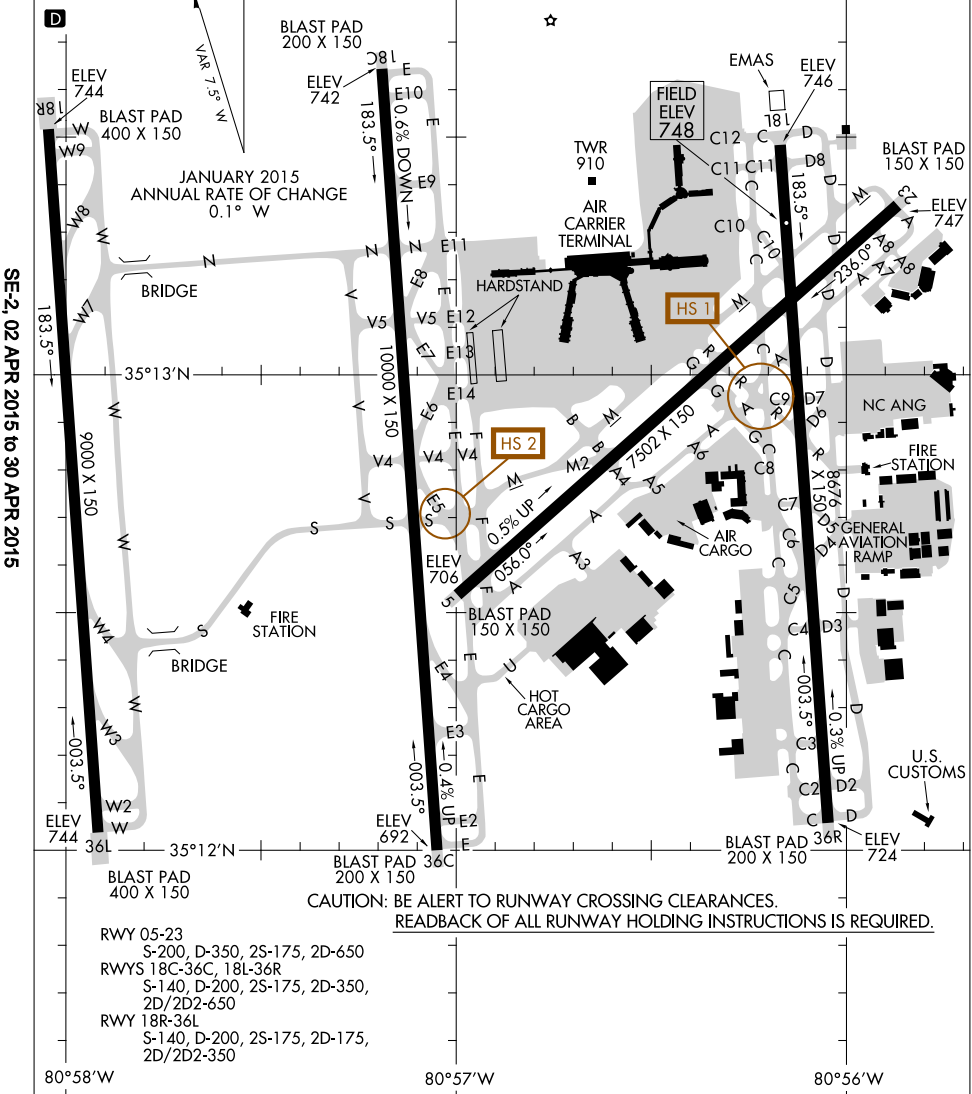
CHARLOTTE/DOUGLAS INTL (CLT)  
CHARLOTTE, NORTH CAROLINA

AL-78 (FAA)

ATIS ARR 121.15  
 DEP 132.1  
 CHARLOTTE TOWER  
 118.1 257.8 (RWY 18L-36R, 05-23)  
 126.4 257.8 (RWY 18C-36C)  
 133.35 257.8 (RWY 18R-36L)  
 GND CON  
 121.8 348.6 (180°-359°)  
 121.9 348.6 (360°-179°)  
 CLNC DEL  
 127.15 348.6

ASDE-X Surveillance System in use.  
 Operate transponders with Mode C  
 on all twys and rwys.

Runway Status Lights in operation.



SE-2, 02 APR 2015 to 30 APR 2015

SE-2, 02 APR 2015 to 30 APR 2015

CAUTION: BE ALERT TO RUNWAY CROSSING CLEARANCES.  
 READBACK OF ALL RUNWAY HOLDING INSTRUCTIONS IS REQUIRED.

RWY 05-23  
 S-200, D-350, 2S-175, 2D-650  
 RWYS 18C-36C, 18L-36R  
 S-140, D-200, 2S-175, 2D-350,  
 2D/2D2-650  
 RWY 18R-36L  
 S-140, D-200, 2S-175, 2D-175,  
 2D/2D2-350

# AIRPORT DIAGRAM

CHARLOTTE, NORTH CAROLINA  
CHARLOTTE/DOUGLAS INTL (CLT)