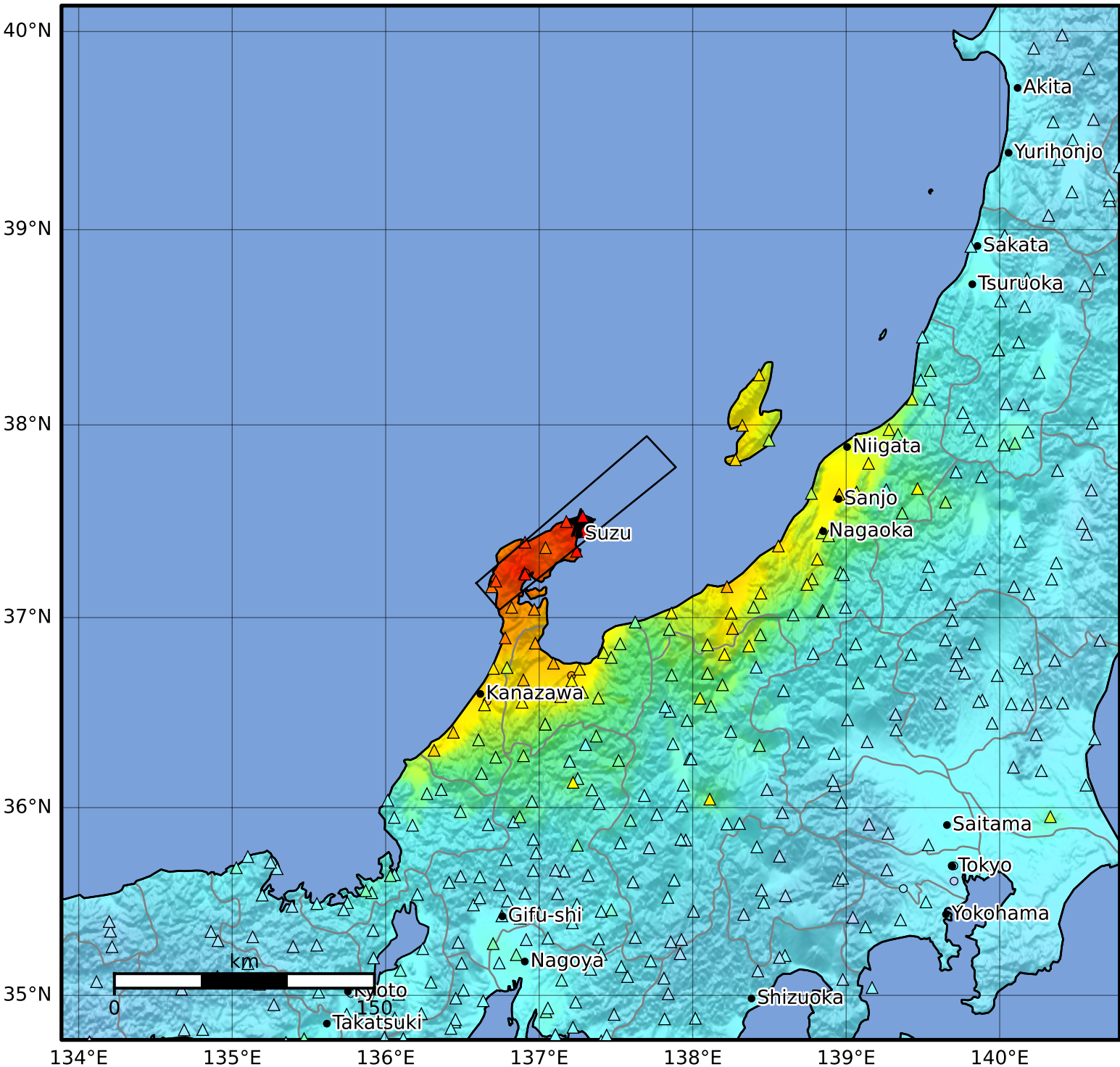


Macroseismic Intensity Map USGS
 ShakeMap: 43 km NE of Anamizu, Ishikawa, JP
 Jan 01, 2024 07:10:09 UTC M7.5 N37.49 E137.27 Depth: 10.0km ID:us6000m0xl



SHAKING	Not felt	Weak	Light	Moderate	Strong	Very strong	Severe	Violent	Extreme
DAMAGE	None	None	None	Very light	Light	Moderate	Moderate/heavy	Heavy	Very heavy
PGA(%g)	<0.0464	0.297	2.76	6.2	11.5	21.5	40.1	74.7	>139
PGV(cm/s)	<0.0215	0.135	1.41	4.65	9.64	20	41.4	85.8	>178
INTENSITY	I	II-III	IV	V	VI	VII	VIII	IX	X+

Scale based on Worden et al. (2012)

Version 10: Processed 2024-03-09T18:30:39Z

△ Seismic Instrument ○ Reported Intensity

★ Epicenter □ Rupture