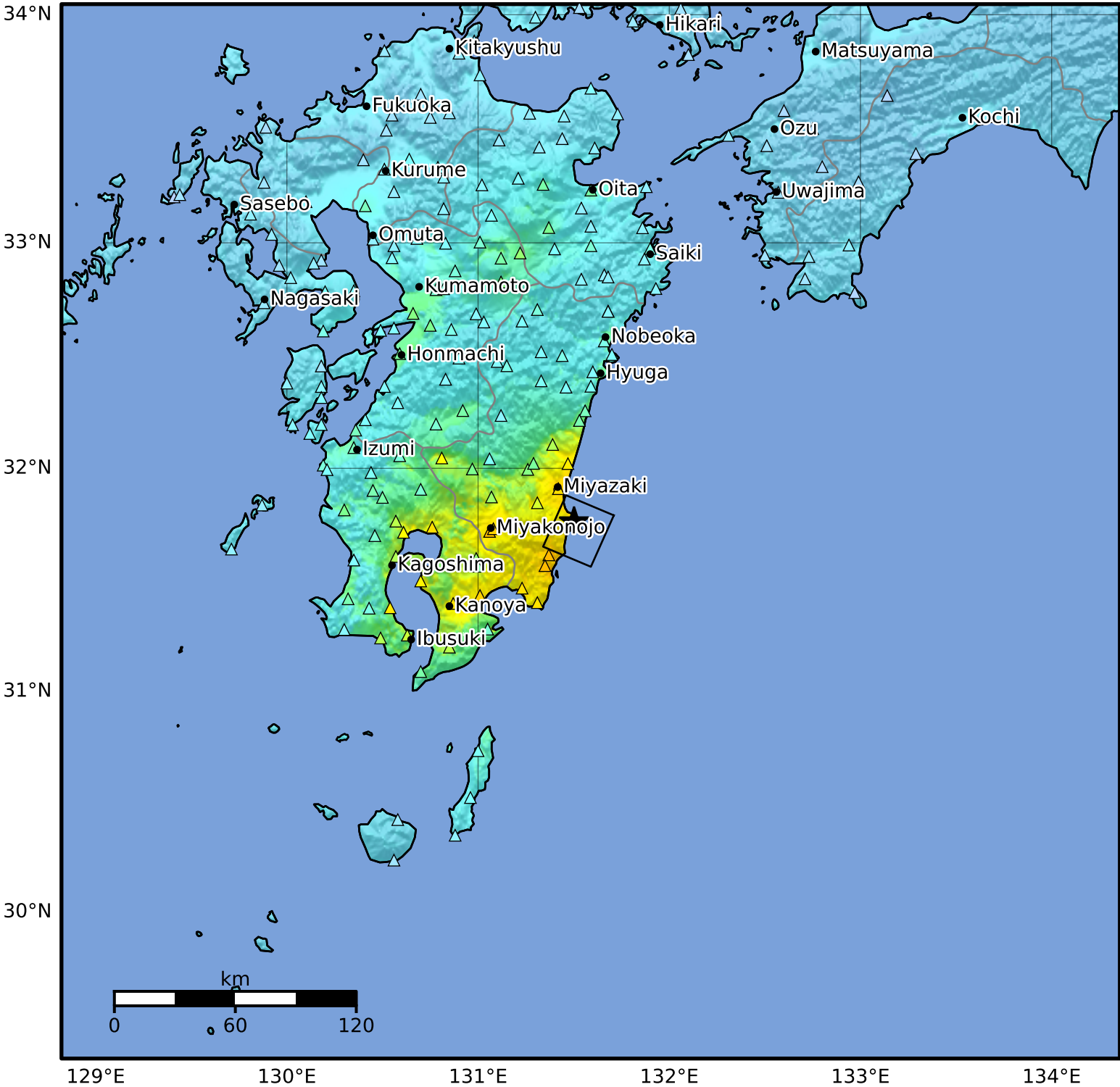


Macroseismic Intensity Map USGS
 ShakeMap: 19 km SSE of Miyazaki, Miyazaki, JP
 Aug 08, 2024 07:42:55 UTC M7.1 N31.76 E131.50 Depth: 24.0km ID:us6000nith



SHAKING	Not felt	Weak	Light	Moderate	Strong	Very strong	Severe	Violent	Extreme
DAMAGE	None	None	None	Very light	Light	Moderate	Moderate/heavy	Heavy	Very heavy
PGA(%g)	<0.0464	0.297	2.76	6.2	11.5	21.5	40.1	74.7	>139
PGV(cm/s)	<0.0215	0.135	1.41	4.65	9.64	20	41.4	85.8	>178
INTENSITY	I	II-III	IV	V	VI	VII	VIII	IX	X+

Scale based on Worden et al. (2012) Version 13: Processed 2024-10-08T16:29:11Z
 △ Seismic Instrument ○ Reported Intensity ★ Epicenter □ Rupture