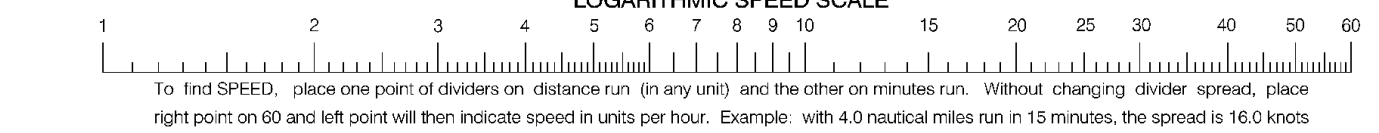


25666

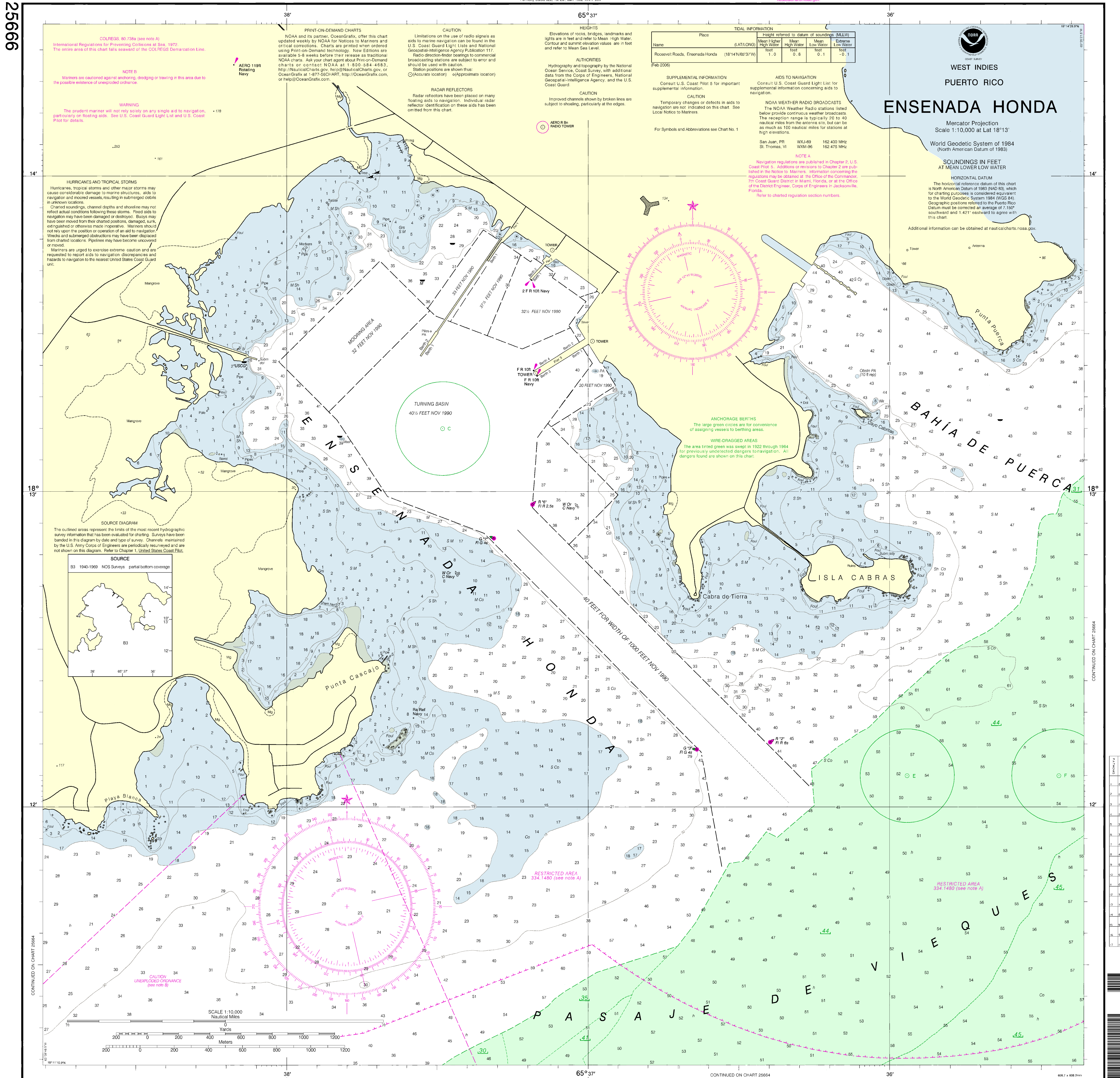


POLLUTION REPORTS Report all spills of oil and hazardous substances to the National Response Center via 1-800-424-8802 (toll free)...

CAUTION Elevations of rocks, bridges, landmarks and lights are in feet and refer to Mean High Water...

CAUTION This chart has been corrected from the Notice to Mariners (NM) published weekly by the National Geospatial-Intelligence Agency...

SOUNDINGS IN FEET



Corrected through LNM: 2513 (6/18/2013) 2 NM: 2513 (6/22/2013)

SOUNDINGS IN FEET

Published at Washington, D.C. U.S. DEPARTMENT OF COMMERCE NATIONAL OCEANIC AND ATMOSPHERIC ADMINISTRATION NATIONAL OCEAN SERVICE COAST SURVEY

This nautical chart has been designed to promote safe navigation. The National Ocean Service encourages users to submit corrections, additions, or comments for improving this chart to the Chief, Marine Chart Division (NCS2), National Ocean Service, NOAA, Silver Spring, Maryland 20910-3292.

Ensenada Honda SOUNDINGS IN FEET - SCALE 1:10,000 25666

Corrected through LNM: 2113 (5/21/2013), NM: 2113 (5/25/2013) This special compilation nautical chart was prepared and updated by the Office of Coast Survey, National Ocean Service, NOAA under the authority of 33 USC 883 and 892. It was compiled for national defense and homeland security purposes and is FOR GOVERNMENT USE ONLY. USERS OTHER THAN DoD SUBMIT COMMENTS TO 888-990-NOAA OR http://www.NauticalCharts.NOAA.gov/staff/contact.htm...