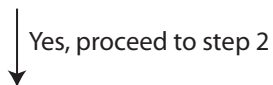


Three-step approach to diagnosis of Raynaud's Phenomenon

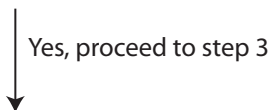
Step 1: Ask screening Question

Are your fingers unusually sensitive to cold?



Step 2: Assess color changes

Occurrence of biphasic color changes during the vasospastic episodes (white and blue)



Step 3: Calculate disease score

- a) Episodes are triggered by things other than cold (i.e. emotional stressors)
- b) Episodes involve both hands, even if the involvement is asynchronous and/or asymmetric
- c) Episodes are accompanied by numbness and/or paresthesias
- d) Observed color changes are often characterized by a well-demarcated border between affected and unaffected skin.
- e) Patient provided photograph(s) strongly support a diagnosis of RP.
- f) Episodes sometimes occur at other body sites (e.g. nose, ears, feet, and areolas).
- g) Occurrence of triphasic color changes during the vasospastic episodes (white, blue, red)

If 3 or more criteria met from Step 3 (a - g), then the patient has RP