

18032

AIRPORT DIAGRAM

AL-827 (FAA)

VALLEY INTL (HRL)
HARLINGEN, TEXAS

ATIS
124.85
HARLINGEN TOWER ★
119.3 317.6
GND CON
121.7

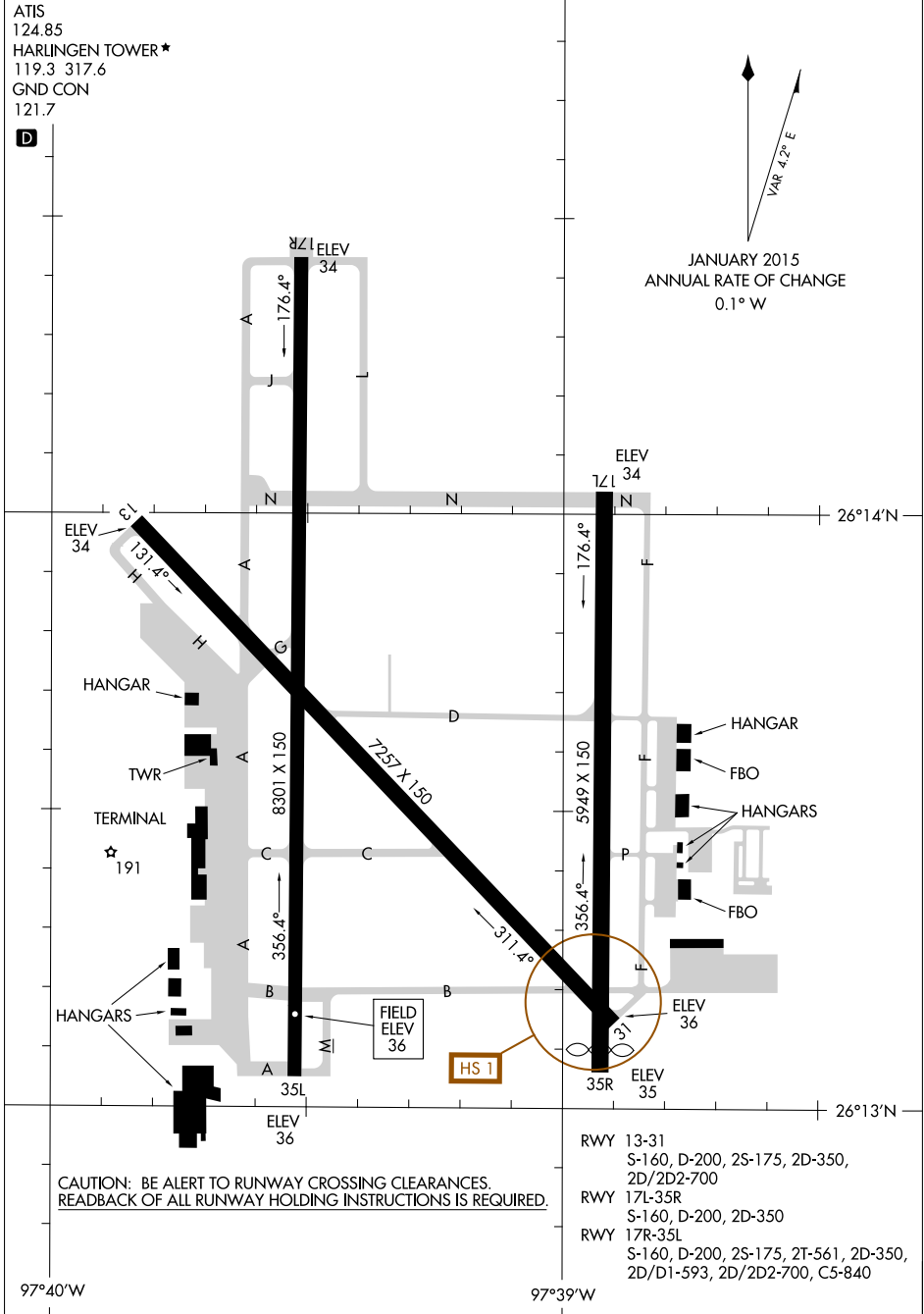
D



JANUARY 2015
ANNUAL RATE OF CHANGE
0.1° W

SC-3, 12 SEP 2019 to 10 OCT 2019

SC-3, 12 SEP 2019 to 10 OCT 2019



CAUTION: BE ALERT TO RUNWAY CROSSING CLEARANCES.
READBACK OF ALL RUNWAY HOLDING INSTRUCTIONS IS REQUIRED.

- RWY 13-31
S-160, D-200, 2S-175, 2D-350,
2D/2D2-700
- RWY 17L-35R
S-160, D-200, 2D-350
- RWY 17R-35L
S-160, D-200, 2S-175, 2T-561, 2D-350,
2D/D1-593, 2D/2D2-700, C5-840

97°40'W

97°39'W

AIRPORT DIAGRAM

18032

HARLINGEN, TEXAS
VALLEY INTL (HRL)