

ATIS 126.65  
 TWR 118.35(130.0)  
 GND 121.6  
 EMG 121.5

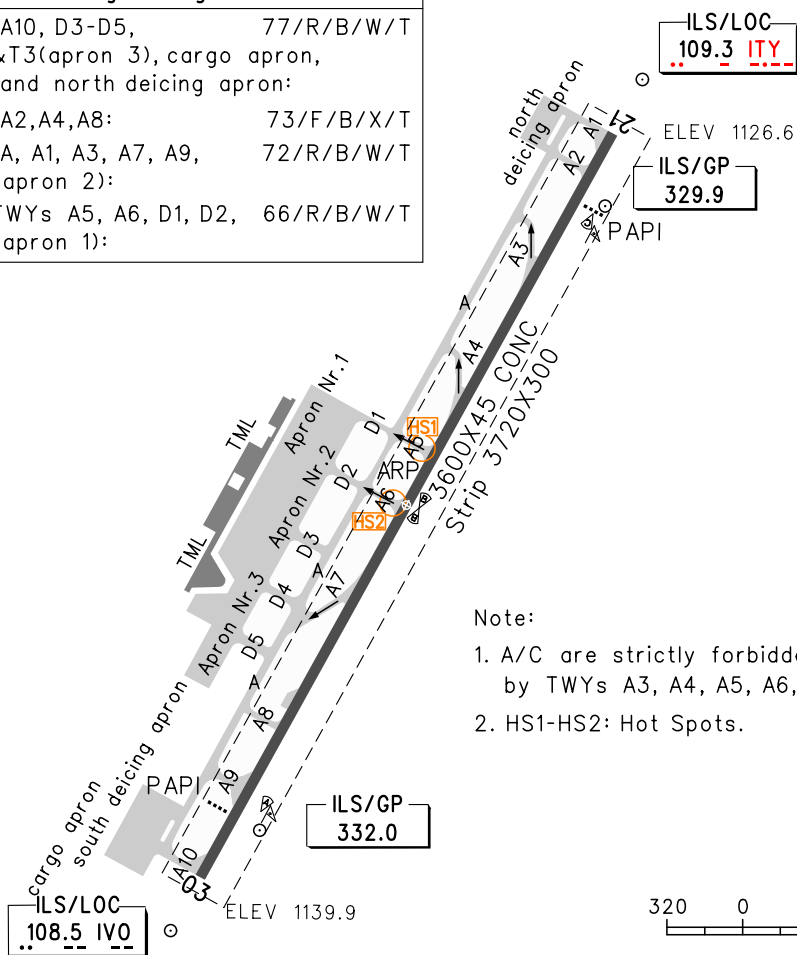
# ZLIC YINCHUAN/Hedong

N38°19.2'E106°23.6' ELEV 1141m

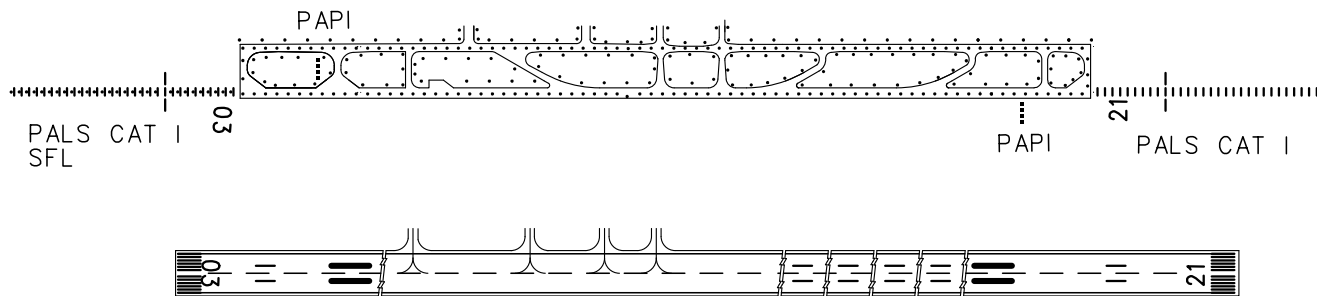
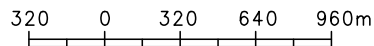
## AERODROME CHART

RWY	Direction	Bearing strength(PCN)
03	032°	TWYs A10, D3-D5, 77/R/B/W/T T1&T2&T3(apron 3), cargo apron, south and north deicing apron:
		TWYs A2,A4,A8: 73/F/B/X/T TWYs A, A1, A3, A7, A9, 72/R/B/W/T T1&T2(apron 2):
21	212°	RWY, TWYs A5, A6, D1, D2, 66/R/B/W/T T1&T2(apron 1):

BEARINGS ARE MAGNETIC  
 ALTITUDES, DISTANCES,  
 ELEVATIONS AND HEIGHTS  
 IN METERS



- Note:
- A/C are strictly forbidden to enter RWY by TWYs A3, A4, A5, A6, A7 without ATC clearance.
  - HS1-HS2: Hot Spots.



TAKE-OFF MINIMA(WITH RELIABLE ALTN)(M)				LIGHTS		
RWY	ACFT Type		REDL	NIL(Day only)	RWY03	RWY21
03/21	2 TURB ENG or 3&4 ENG	CAT A.B.C	RVR 400 VIS 800	RVR 500 VIS 800	PALS CAT I SFL PAPI REDL RCLL	PALS CAT I PAPI REDL RCLL
		CAT D				
	Other		VIS 1600			

Changes: ILS/LOC "ITY".