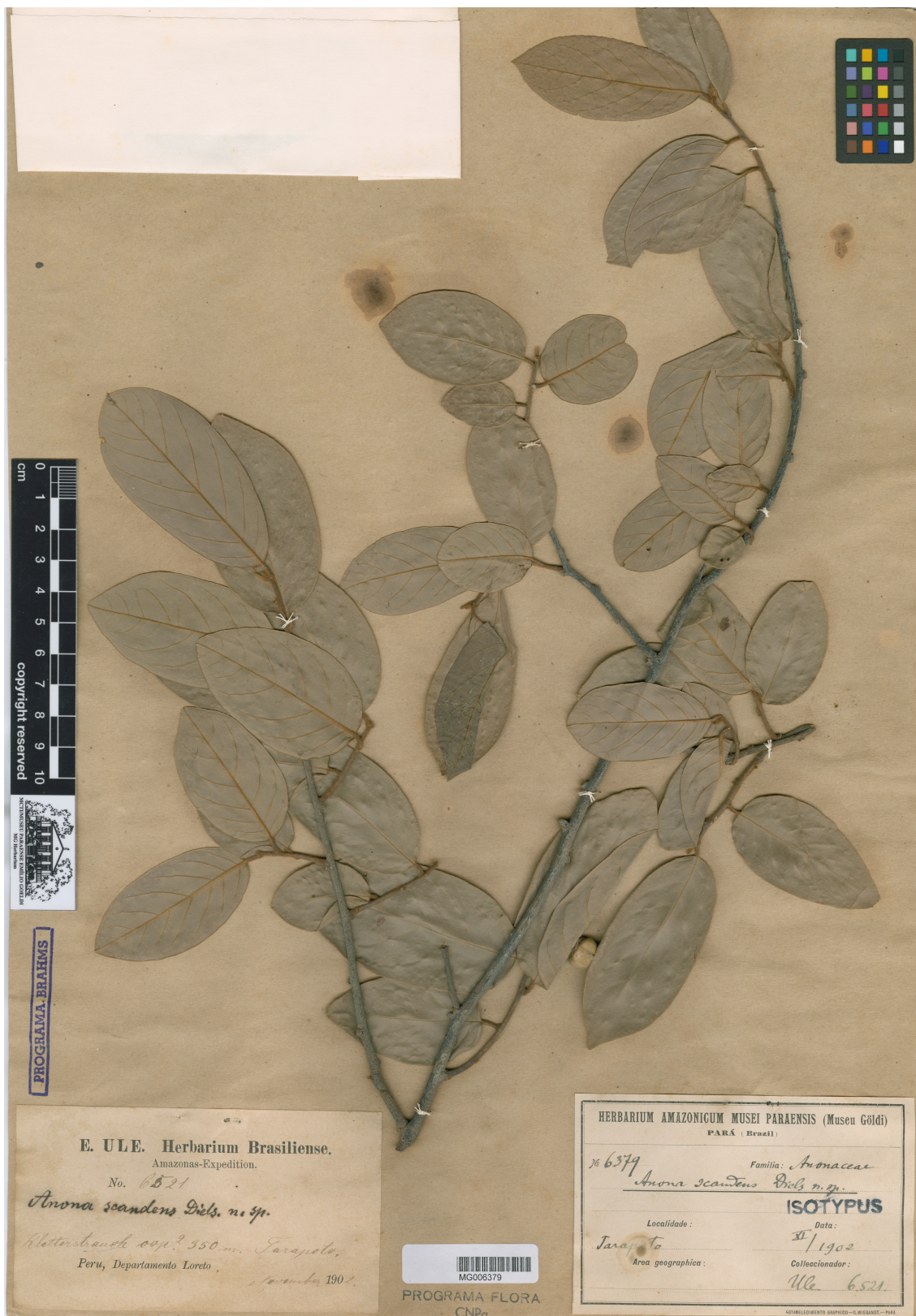


ANNONAECAE *Annona scandens* Diels

Código de Barra: MG006379



0 1 2 3 4 5 6 7 8 9 10
cm
copyright reserved



PROGRAMA BRAHMS

E. U.L.E. Herbarium Brasiliense.
Amazonas-Expedition.
No. 6521
Annona scandens Diels, n. sp.
Hinterstraußh. exp. 350 m. Tarapoto,
Peru, Departamento Loreto,
November 1901.



PROGRAMA FLORA
CNPq

HERBARIUM AMAZONICUM MUSEI PARAENSIS (Museu Göldi)
PARÁ (Brazil)
No. 6379
Familia: Annonaceae
Annona scandens Diels, n. sp.
ISOTYPUS
Localidade: Tarapoto
Data: XI/1902
Ara geographica: Ule
Collectionador: Ule 6521

COPYRIGHT WERTZ GRAPHIC - G. WIEBNER - 2011