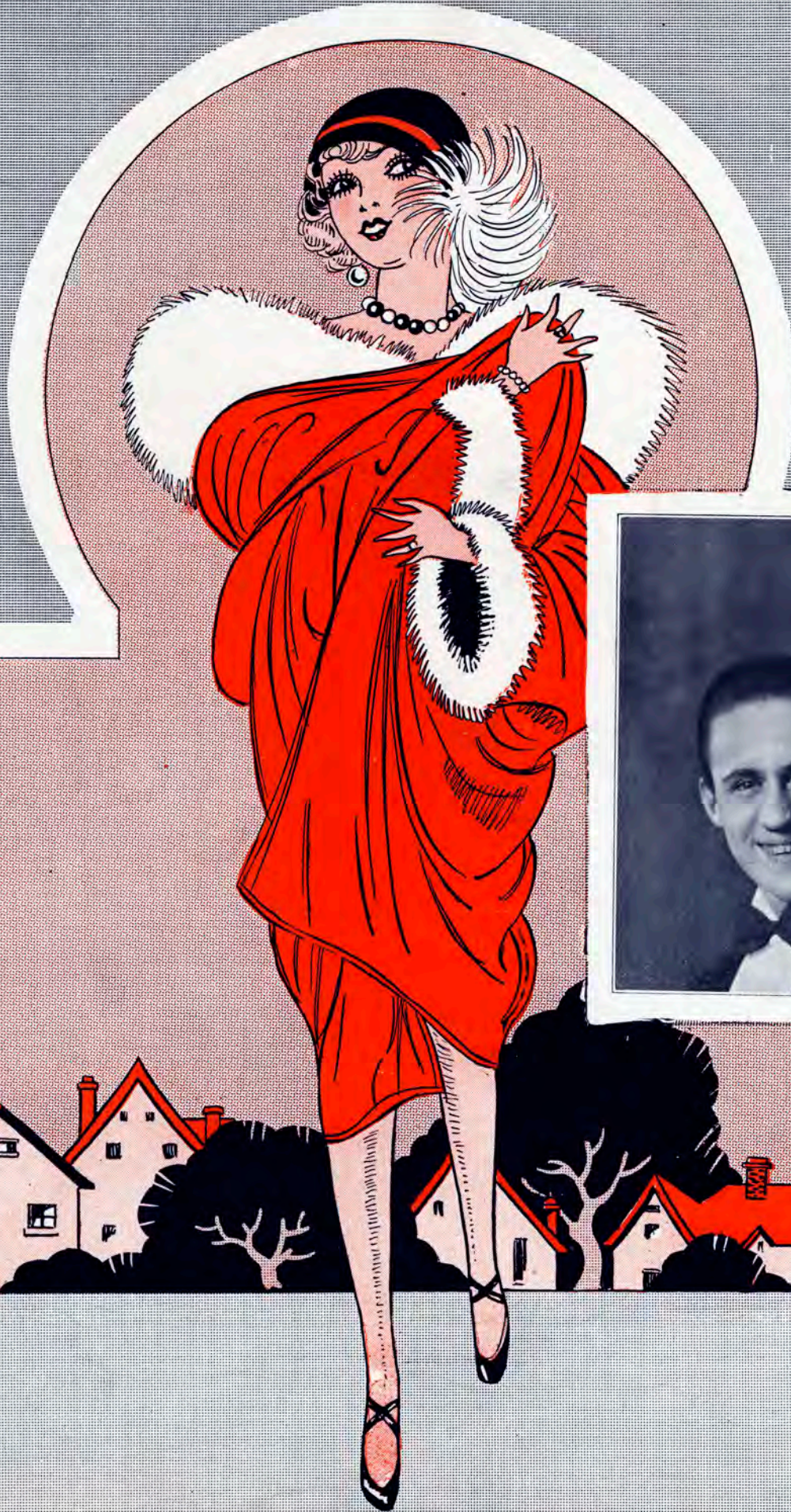


YES SIR! THAT'S MY BABY

WITH
UKULELE
ARRANGEMENT

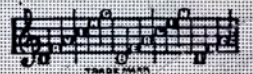


Words by
Gus Kahn
Music by
Walter Donaldson



FEATURED BY
BADGER and MUESELER

Irving Berlin, Inc.
MUSIC PUBLISHERS
1607 Broadway New York



MADE IN
"USA"

Leff

Yes Sir, That's My Baby

Words by
GUS KAHN

With Piano
Tune Ukulele
A D F# B
Put Uke Capo on 1st Fret

Music by
WALTER DONALDSON

Moderato

Musical notation for the piano introduction, consisting of two staves (treble and bass clef) in a 4/4 time signature. The key signature has two flats (B-flat and E-flat). The music starts with a forte (*f*) dynamic and features a series of chords and rhythmic patterns.

Musical notation for the piano accompaniment, continuing from the introduction. It includes a section marked "Till ready" with a *p* (piano) dynamic. The notation consists of two staves.

VOICE

Who's that com - ing down the street? Who's that look - ing so pe - tite?
 Who's the "who" I rave a - bout? Who do I feel blue with - out,

Musical notation for the first vocal line and its piano accompaniment. The vocal line is on a single staff with lyrics. The piano accompaniment is on two staves. A *p* dynamic is indicated.

Who's that com - ing down to meet me here?
 In the Win - ter, Sum - mer, Spring and Fall?

Musical notation for the second vocal line and its piano accompaniment. The vocal line is on a single staff with lyrics. The piano accompaniment is on two staves. Ukulele chord diagrams are shown above the vocal line.

Ukulele arr. by
MAY SINGHI BREEN

Copyright MCMXXV by IRVING BERLIN, Inc., 1607 B'way, N.Y.
International Copyright Secured MADE IN U.S.A. All Rights Reserved

Who's that you know who I mean, Sweet-est "who" you've ev - er seen,
 What was I just "gon - na" say, I for - get, but an - y way,

I could tell her miles a - way from here.
 Here's the most im - port - ant thing of all.

CHORUS

Yes, Sir, That's my Ba - by, No, Sir,
 Yes, Sir, That's my Ba - by, No, Sir,

Don't mean "May - be" Yes, Sir, That's my Ba - by now.
 Don't mean "May - be" Yes, Sir, That's my Ba - by now.



Yes, ma'am we've de - cid - ed
Well well, "lookit" that ba - by



No ma'am, we won't hide it, Yes, ma'am
Do tell, don't say "may - be" Nell's bells



you're in - vit - ed now. By the
won't she cause some row. Pret - ty



way, By the way When we
soon Pret - ty soon We will

reach the preach-er I'll say, (with feeling)
hear that Lo - hen-grin tune, (I'm sayin')

Yes, Sir, That's my Ba - by, No, Sir,
Who for should she be by, sir, No one

don't mean "may - be" Yes, Sir, That's my Ba - by
else but me sir, Yes sir, That's my Ba - by

now. now. now. now.